



**Ansley Common, Nuneaton
CV10 0PP**

Asking Price £200,000

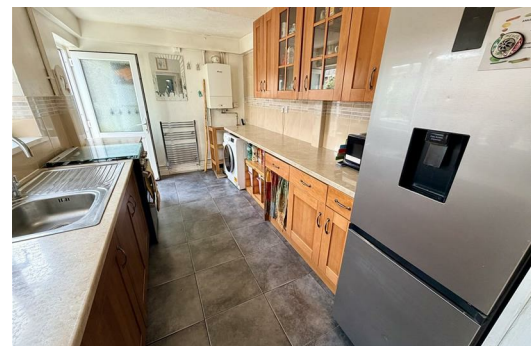
Freehold - North Warwickshire Council Band: B - EPC: E

Pointons Estate Agents welcome you to this charming end terrace house located in the popular Ansley Common, Nuneaton. This delightful property boasts two reception rooms, providing ample space for entertaining guests or simply relaxing with your loved ones. With two cosy bedrooms and the family bathrooms, this home offers comfort and convenience for its residents. There is also a separate annex with a single room and private shower room / w.c.

One of the standout features of this property is the sun trap, perfect for enjoying a cup of tea in the morning or unwinding with a book in the afternoon. The double garage and off-road parking provide plenty of space for your vehicles, ensuring convenience for those with a busy lifestyle.

Situated in a popular suburb backing onto allotments, this house offers a good for nature lovers, the property is close to open countryside, allowing for leisurely walks and outdoor activities right at your doorstep.

Don't miss the opportunity to make this lovely house your home. Contact us today to arrange a viewing and experience the charm and tranquillity that this property has to offer.



Entrance

Via double glazed entrance door leading into:

Lounge

12'1" x 14'1" (3.69m x 4.30m)

Double glazed window to front, feature gas fireplace with surround, radiator, telephone point and vinyl flooring.

Dining Room

12'2" x 14'1" (3.70m x 4.30m)

With double glazed window to front, fireplace with surround, vinyl flooring, TV point, telephone point, radiator stairs off to the first floor, understairs storage cupboard and double glazed French doors into rear garden.

Kitchen

14'1" x 7'10" (4.30m x 2.38m)

Fitted with a matching range of base and eye level units with worktop space over, stainless steel sink unit with single drainer and mixer tap over, plumbing for washing machine, space for fridge/freezer, tumble dryer and cooker, double glazed window to side, heated towel rail, tiled flooring, combination boiler and double glazed door into garden.

Landing

Carpeted with doors off to various rooms.

Bedroom

12'0" x 14'1" (3.67m x 4.30m)

Two double glazed windows to front, two double wardrobes with part mirrored doors, carpeted and radiator.

Bedroom

12'1" x 10'4" (3.68m x 3.15m)

Double glazed window to rear, radiator, carpeted and storage cupboard.

Shower Room

Fitted with a shower cubicle and sliding screen, hand wash basin with mixer tap and built in storage beneath, low-level WC, obscure double glazed window to rear, heated towel rail and vinyl flooring.

Annex

8'7" x 6'8" (2.62m x 2.04m)

Access via double glazed door from rear garden double glazed window to rear, double glazed window to side, having power, lighting, vinyl flooring and shower enclosure with curtain rail.

WC

Having double glazed window to front, two piece suite having wash hand basin with mixer tap and base cupboard, low-level WC and vinyl flooring.

Outside

Foregarden to front. To the rear of the property is a low maintenance garden having paved area with artificial grass leading to access to annex and garage also offering side gated access. Behind the garage is an area of hard standing which can be used for parking.

Double Garage

Having window and door to rear garden, up and over door with power and lighting.

Tenure

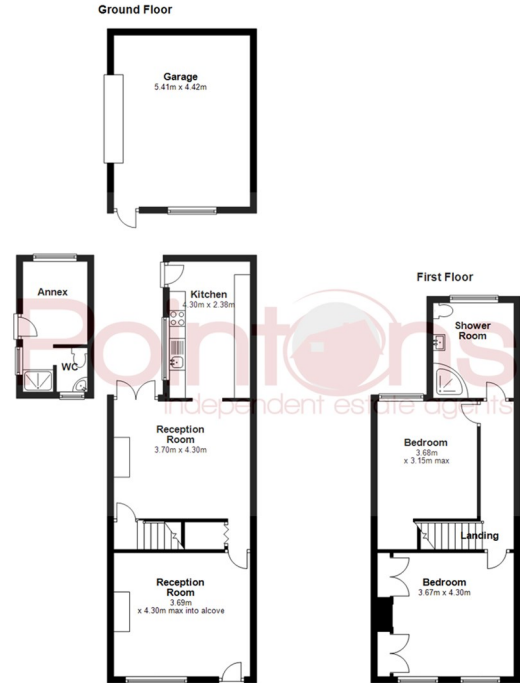
Freehold

Council Tax

North Warwickshire Council - Band B

General Information

Please Note: All fixtures & Fittings are excluded unless detailed in these particulars. None of the equipment mentioned in these particulars has been tested; purchasers should ensure the working order and general condition of any such items.



Energy Efficiency Rating		Current	Potential
Very energy efficient - lower running costs			
(92 plus)	A		
(81-91)	B		
(69-80)	C		
(55-68)	D		74
(39-54)	E	44	
(21-38)	F		
(1-20)	G		
Not energy efficient - higher running costs			
England & Wales		EU Directive 2002/91/EC	

Environmental Impact (CO ₂) Rating		Current	Potential
Very environmentally friendly - lower CO ₂ emissions			
(92 plus)	A		
(81-91)	B		
(69-80)	C		
(55-68)	D		
(39-54)	E		
(21-38)	F		
(1-20)	G		
Not environmentally friendly - higher CO ₂ emissions			
England & Wales		EU Directive 2002/91/EC	



COVENTRY, CV1 2NT
 coventry@pointons-group.com
 024 7710 333
 Company No: 7359350

NUNEATON, CV11 4AL
 nuneaton@pointons-group.com
 024 7637 3300
 Company No: 6743033

ATHERSTONE, CV9 1AU
 atherstone@pointons-group.com
 01827 711911
 Company No: 81323250

